

**SECTION B-B**

Dimensions and Tolerances:

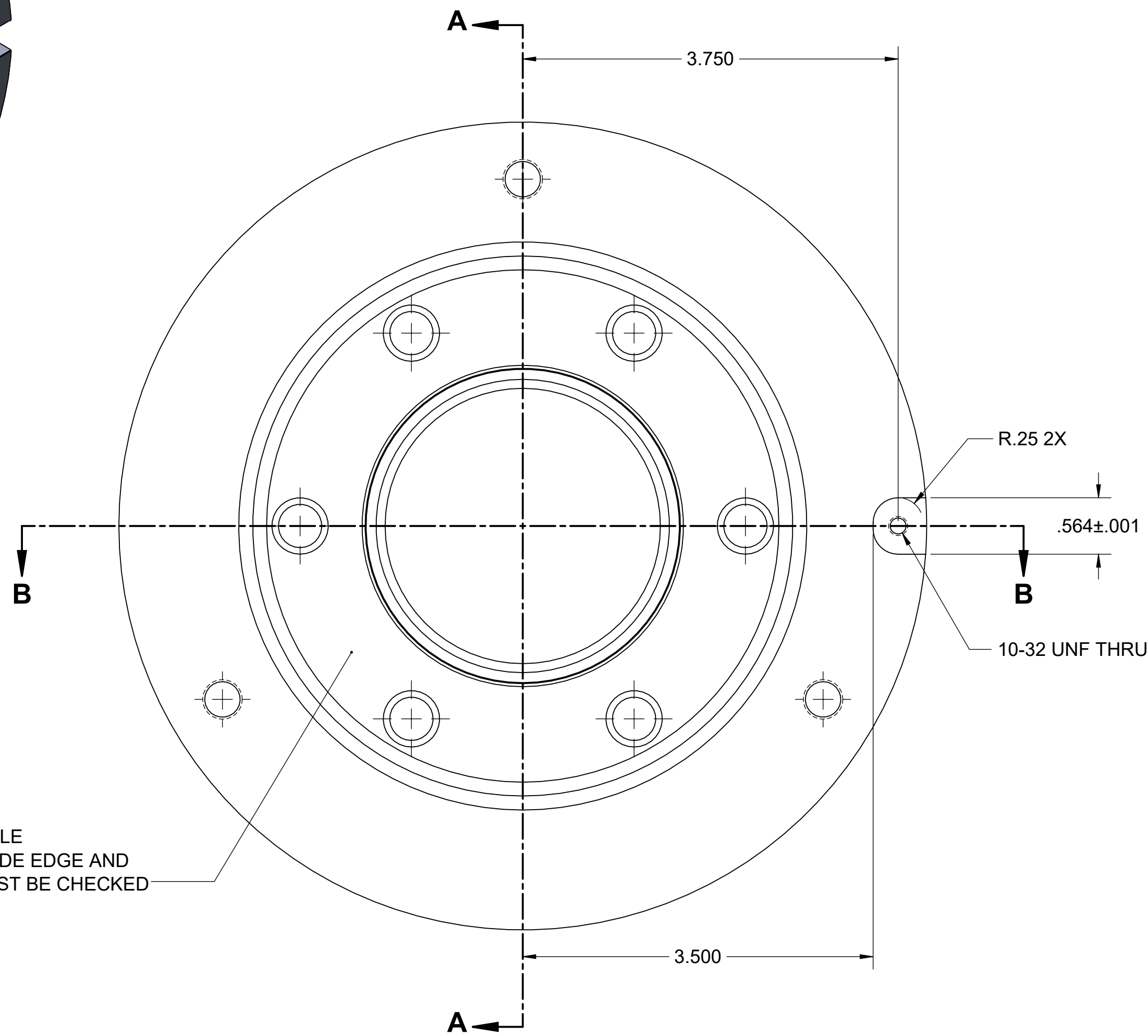
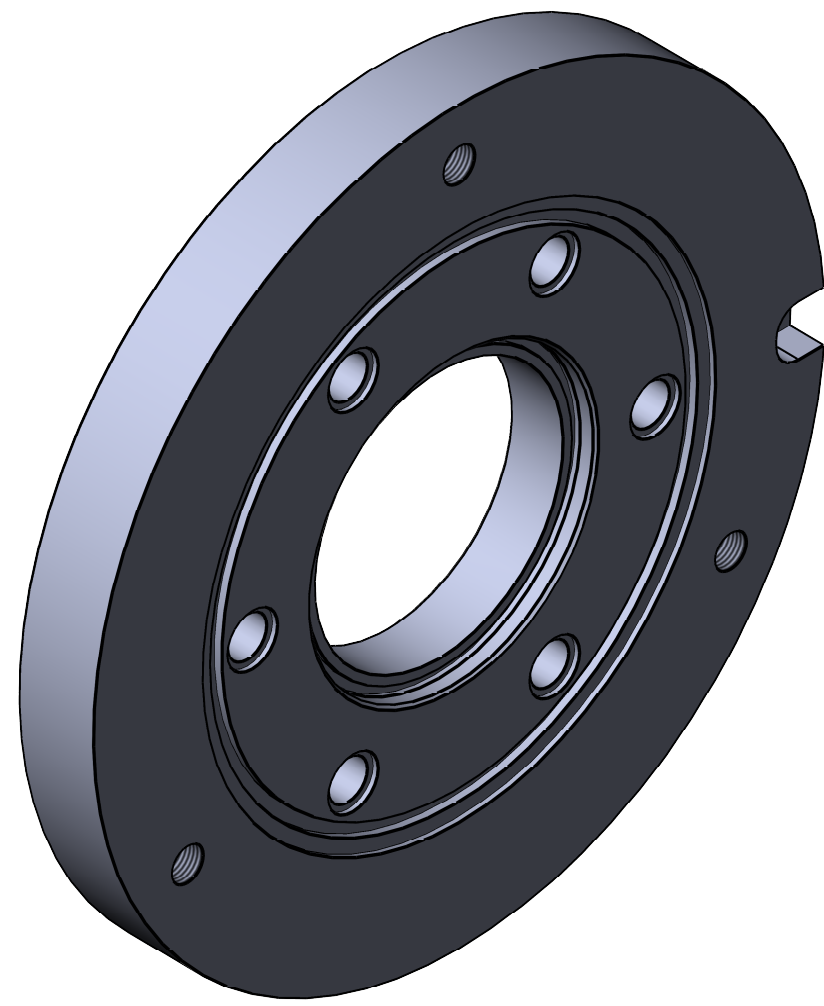
- $\phi 3.188 \pm .003$
- $\phi 2.750 \pm .001$
- $\phi 2.930$
- $\phi 3.130$
- $\phi 3.1503 \pm .0007$
- $\phi 5.118$
- $\phi 5.394$
- $\phi 5.675$
- $\phi 8.07$

Surface Finish Requirements:

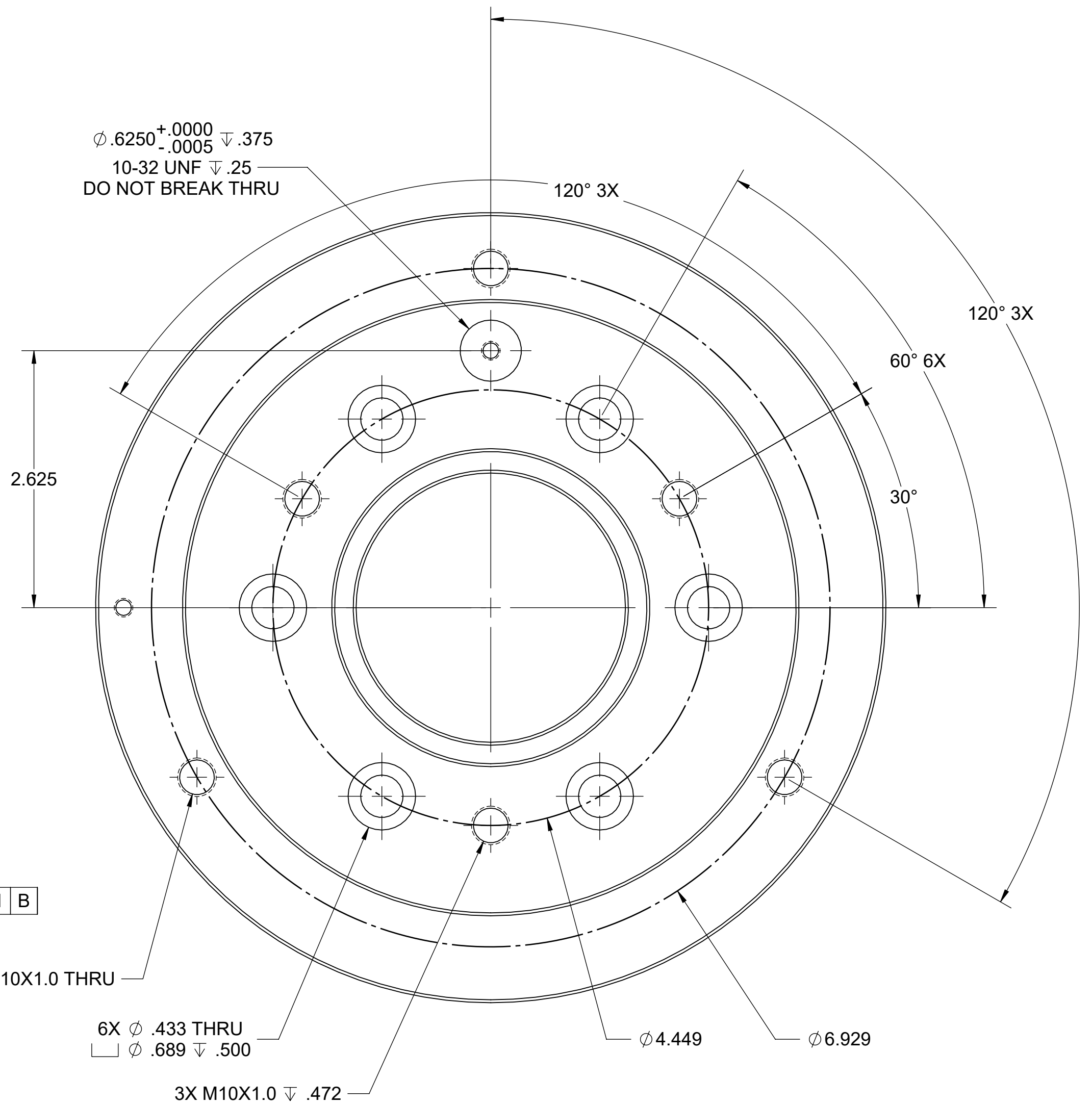
- $0.057 \pm .003$
- $0.163 \pm .002$
- $0.055 \pm .003$
- $0.083 \pm .003$
- $0.118$

Other Dimensions:


- $.150$
- $.375$
- $R.015 \text{ MAX}$
- $(.100) \text{ O-RING}$
- $(.138) \text{ O-RING}$
- $6X \phi .563 \text{ EQ. SPCD. CL OF BOLTS}$



NO BURRS OF ANY KIND PERMISSIBLE  
PROTRUDING ON THIS FACE. OUTSIDE EDGE AND  
PATTERNED O-RING RECESSES MUST BE CHECKED



REVISION TABLE					
REV	REV DESCRIPTION	ECN/NPI#	DATE	DFT	ENG
A	REVISED MATERIAL WAS: 28057-CSTG	ECN-14203	3-28-14	TO	TO

DIMENSIONS ARE IN INCHES DEC. $X \pm 1$ , $XX \pm 0.01$ , $XXX \pm .005$ ANGLES $XX \pm 0^{\circ}30'$ FRACTION $\pm 1/64"$ FINISH = 125 RMS DIMENSIONING PER ASME Y14.5		APPROVALS DRAWN BY: <b>DH</b> 7/14/2020 ENGINEER: <b>DH</b> 7/14/2020		<b>PART-INCH</b> DESCRIPTION: <b>ADAPTER FLATE-8" CHUCK-SWI 4TH AXIS</b>	
 THIRD ANGLE PROJECTION		MASS (LBS): <b>1.330</b> SURF AREA (sq") <b>139.935</b>		PART NUMBER: <b>28057</b>	
MATERIAL & FINISH: <b>28057-BLANK</b>		DETAIL:		REV: <b>-</b> SIZE: <b>D</b> SHEET: 1 OF 1	