

# TRAK 2<sup>op</sup>

The compact VMC that...

- Goes almost everywhere
- Does almost anything
- And is easy to use!



**TRAK** MACHINE  
TOOLS



SOUTHWESTERN INDUSTRIES, INC.

# Productive

Get More from the People You Already Have!

Because it fits almost anywhere, you can have the same operator run the TRAK 2<sup>op</sup> along with another machine in the same work cell. Training takes less than half a day, so everyone in your shop can learn to use it.



## Compact:

- 2.5' x 4' footprint
- Fits easily almost anywhere



## Capable:

- Three-axis simultaneous CNC
- 8-station tool changer
- Built-in Jergens™ ball locks



## Substantial Capacity:

- X, Y, Z travels: 14" x 12" x 17"
- 3HP (continuous) spindle motor

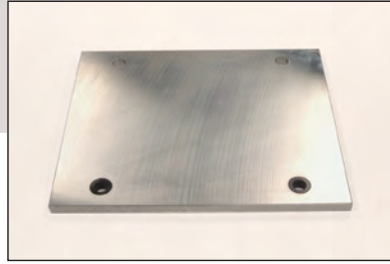
# Options

Customize to Fit Your Needs



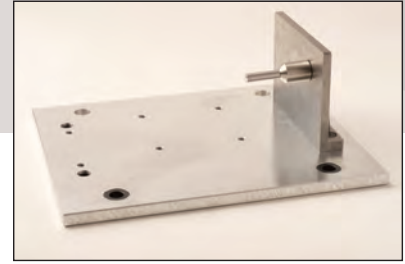
## 2op Vise

- Modified for the TRAK 2<sup>op</sup> – recommended



## Fixture Plate

- Precision plate with primary liners, 18" x 15"



## Fixture Plate Set Up

- Includes liners, fence, and vise stop assembly



## Vise Stop

- Includes mag base and 1", 2" and 3" extensions



## Tool Holders

- BT30, eight pieces of assorted sizes



## Retention Knobs

- 30 taper



## Ball Lock Liners – Sets of Eight

- For fixture plates. High and lower precision for use with Primary and Secondary Locating Holes in the 2<sup>op</sup> table



## Ball Lock Clamping Devices

- Available in sets of four



## Mobile Tool Cart

- Convenient and easy to move

## Additional Options

- Voltage change from 220V to 440V
- Single phase option (reduces HP by 40%)
- Indexer ready kit
- External USB drive
- Offline programming

# Specifications

Compact but Capable

## Overall Machine Dimensions

- WxDxH - 30.5" x 52" x 101"  
(H is with mill head all the way up,  
D includes door handle)
- Min height to fit through doorway  
- 92" (Z cable carrier collapsed)

## Table Dimensions

- Table size - 18" x 15"
- Number of tee slots and pitch -  
4 @ 63 mm
- Tee slot width - 0.630" (16 mm)
- Table maximum load - 500 lbs.
- Ball Lock® hold down force -  
2250 lbs @ 35 in/lbs of torque
- Machine /Shipping weight -  
2825 lbs/3175 lbs.

## Travel

- X, Y, Z - 14" x 12" x 17"
- Max distance from spindle nose  
table surface - 20.25"
- Min distance from spindle nose  
table surface - 2.75"
- Max swing clearance from spindle  
center to column - 14"
- Max rapid speed X, Y & Z-axis,  
inches per minute - 600

## Spindle

- Tool holder type - BT30
- Spindle nose diameter -  
2.2" (56 mm)
- Max RPM - 6000
- Horsepower - 3 HP

## Automatic Tool Changer

- Tool Capacity - 8
- Max tool diameter - 2"
- Retention knob - BT30

## Air Requirements

- Pressure - 90 psi
- Quality - Air dried/filtered water  
separator upstream of the machine
- CFM - 2.5 at 90 psi
- SCFM - 18

**Machine  
Ships with  
a Pallet Jack**



## ProtoTRAK System Hardware

- ProtoTRAK TMX CNC
- Three-axis CNC and DRO
- 5.7" active-matrix color LCD screen
- 2 USB ports
- LED status lights built into display
- 512 MB USB Drive (Optional)
- Uncluttered front panel with  
few hard keys
- Beacon light
- Override of program spindle speed
- Coolant pump
- Networking via Ethernet
- Coolant tank 15 gal.

## Software Features – General Operation

- Clear, uncluttered screen display
- Prompted data inputs
- English language – no codes
- Soft keys - change within context
- Windows® operating system
- Three-axis CNC
- Inch/mm selectable
- Rigid Tapping
- Reference to ball lock locations on table
- Absolute home location
- Canned cycles – pockets, profiles,  
bolt hole patterns, etc.
- Indexer compatible

# Versatile

Cost Effective for a Variety of Jobs

The TRAK 2<sup>OP</sup> is ideal for so many jobs because it is easy to program and set up right on the shop floor. It is also versatile enough to run complex three-axis parts you program offline.



## Easy to Move:

- Pallet jack included at no extra cost
- Move and set up in minutes
- Position wherever needed to do work



## Easy to Use:

- ProtoTRAK TMX Control
- Conversational language or G-Code
- Can be programmed right on the shop floor



## Easy to Increase Productivity:

- Have operators run an additional machine
- Keep primary machines running with jobs that fit their capabilities
- Eliminate stacking or moving parts
- Reduce overall cycle times

# TRAK 2<sup>op</sup>

Check out these other products from **TRAK Machine Tools**

## TRAK LPM VMC

*It's more than a machine. It's a machining system organized to reduce labor that's wasted on setups (publication F16898)*



## TRAK Toolroom Machines

*Bed Mills, Knee Mills, and Lathes featuring the ProtoTRAK CNC. Premium machines for small lot and Toolroom work. (publication F16885)*



Want to see more? Check out our website at [www.trakmachinetools.com](http://www.trakmachinetools.com)

—or—

Call (800) 876 - 0601 for our desktop demo. **We come to you!**



2615 Homestead Place  
Rancho Dominguez, CA 90220

T | 310.608.4422  
[www.trakmachinetools.com](http://www.trakmachinetools.com)