

# Southwestern Industries, Inc.

## Site Preparation Guide

### TRAK FHM7

---

Before an Authorized Field Service Technician can perform the machine's final checkout, the following requirements must be met:

- The machine must be in position and placed on its rest pads.
- To move the machine while on the pallet, a 15000 lb. forklift with a 24" load center & 6' fork extensions is required. Depending on the load center or rating of the forklift, a larger fork lift may be required. The center of gravity (CG) of the machine while on the pallet is 42" from the edge of the pallet. Please see the manual for more information about lifting the machine.
- The machine must be wired (refer to the installation and service manual).
- The machine must have air hooked up if power drawbar is installed (see the installation and service manual).
- The machine must be cleaned. Remove all grease from the way surfaces.
- The machine must be leveled (refer to the installation and service manual)

---

## Space & Weight

- Floor area = 171.65" x 119.5"
- Height = 101"
- Footprint = 37" x 62.2"
- Net (approx.) Weight = 7650 lbs.
- Shipping (approx) Weight = 7975 lbs.
- Pallet size = 90.5" x 84"
- The floor area encompasses the space required for the table to move full travel in both directions, plus a 22" clearance from the rear of the bed. The space at the rear is required for repair access to the electrical cabinet.
- A solid and level foundation to maintain approximately 7650 lbs. plus the weight of the workpiece (maximum total 9850 lbs) is required. Six leveling screws are provided

## Electrical

- A separate 220 VAC, 37.5 amp minimum, 60 Hz, 3 phase circuit is required.
- A separate 110vac, 15 amp minimum, 60hz circuit is required for proper operation
- Machine tool must be earth grounded.
- A step down transformer is required for 440V. The transformer must be sized to carry a load of 37.5 amps minimum.

## Air

- ¼" NPT connection.
- Air pressure not to exceed 100psig.

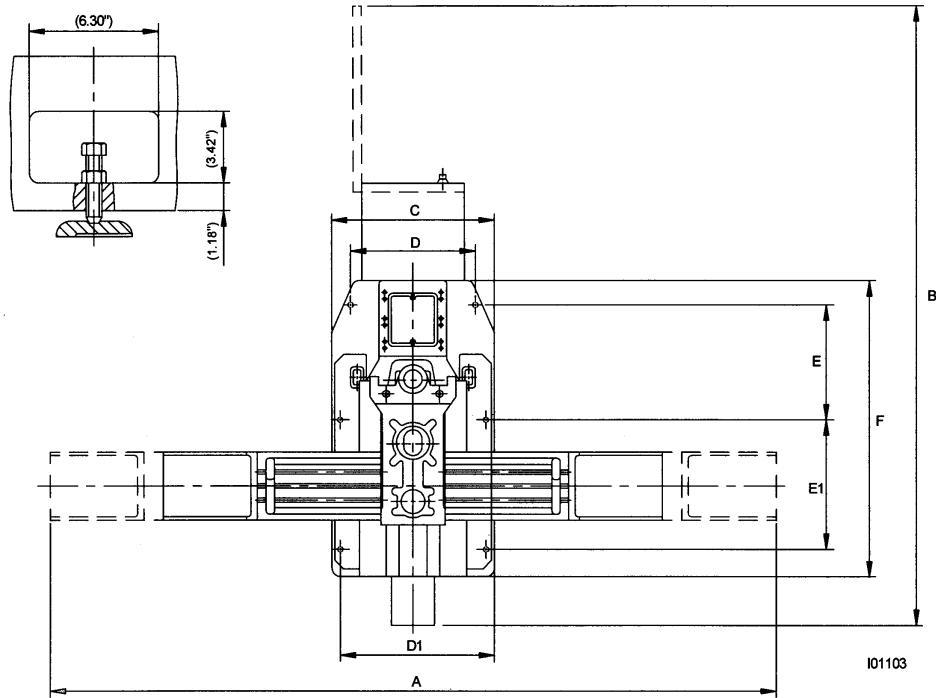


Southwestern Industries, Inc.

2615 Homestead Place  
Rancho Dominguez, CA 90220-5610 USA  
T | 310.608.4422 | F | 310.764.2668

e-mail: [sales@southwesternindustries.com](mailto:sales@southwesternindustries.com) [service@southwesternindustries.com](mailto:service@southwesternindustries.com) | web: [southwesternindustries.com](http://southwesternindustries.com)

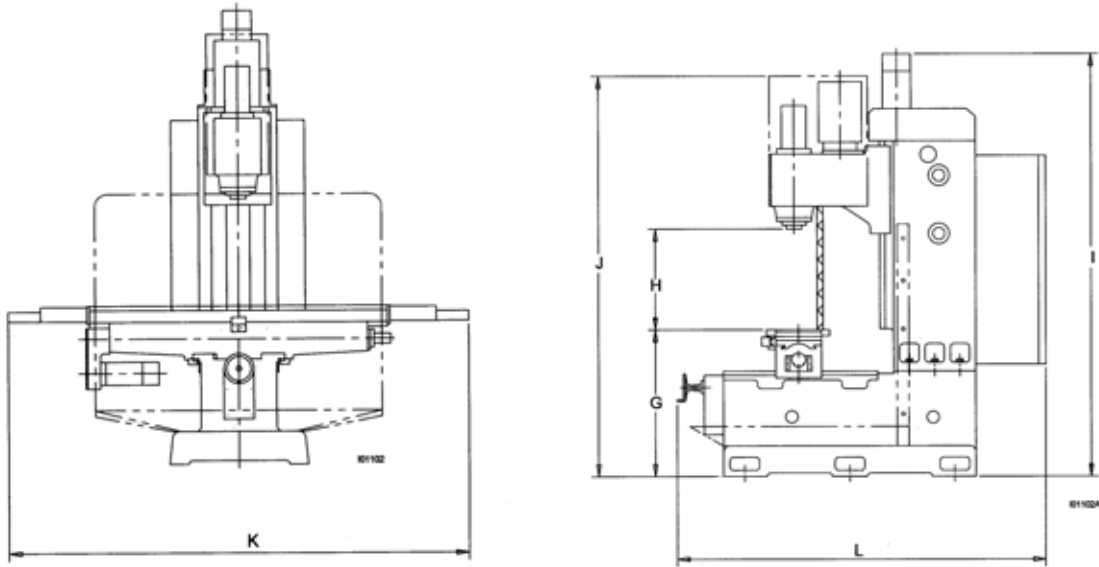
Southwestern Industries, Inc.  
**Site Preparation Guide**  
 TRAK FHM7



FHM7 Machine Footprints

A	Overall width	171.65"
B	Overall length	119.5"
C	Bed width	42.52"
D	Bed width between leveling screws	27.87"
D1	Bed width between leveling screws	39.76"
E	Distance between leveling screws	26.57"
E1	Distance between leveling screws	26.57"
F	Bed length	63"

Southwestern Industries, Inc.  
**Site Preparation Guide**  
 TRAK FHM7



FHM7 Overall Dimensions

G	Height of table from bottom of bed	38.25"
H	Distance from spindle nose to table	24"
I	Height of machine from bottom of bed to top of Z axis motor	91.75"
J	Height of machine from bottom of bed to top of spindle motor cover	92.5"
K	Width of machine including table	110.5"
L	Length of machine with electric box door closed	93.75"